

An aerial photograph of a traditional Japanese garden, likely in Kyoto. The garden features several interconnected ponds of different colors: a large pinkish-red pond on the left, a bright orange pond at the top, and two white ponds at the bottom. The ponds are separated by narrow, winding paths and stone-lined channels. The overall composition is geometric and balanced, with the paths creating a network that divides the garden into distinct sections.

M O L F O[®]

KYOTO



MOLFO

2019

CONTACT

www.molfo.net

342 Yorozuyacho Shimogyoku Kyoto Japan

CREATIVE & ART DIRECTION

Hiromi Kim

PHOTOGRAPHY

Tom Hegen* - cover page

Evgeni Evgeniev

Toshitaka Ogasawara

Kanya Hiromori

Takao Maruyama

Super Studio

SPECIAL THANKS TO CONTRIBUTORS

ikurica ARCHITECT DESIGN OFFICE

NIMON KYOTO

Kumi Ahn

Tomoko Anyoji

Amiko Kano

Christopher McCarthy

Shaheed Rupani

The Paris Agreement was adopted by consensus on 12 December 2015. It was the first international framework for climate change in 18 years since the Kyoto Protocol, and it is the world's first framework to participate in all 196 countries joining the United Nations Framework Convention on Climate Change (UNFCCC) . The Paris Agreement's long-term goal is to keep the increase in global average temperature to well below 2 °C above pre-industrial levels; and to limit the increase to 1.5 °C, since this would substantially reduce the risks and effects of climate change.

Our work is greatly influenced by visible climate change, and to this end we strive to create products that are environmentally friendly. We will make every effort to contribute to a sustainable society.

*Tom Hegen is an aerial photographer based in Munich. He uses the stylistic elements of abstraction and aestheticization in his aerial photography to draw attention to environmental issues. His photo book "HABITAT human - altered landscapes" has won many awards.



M O L F O

Molfo is an acronym for Modern Life Formation. It is based on the concept of "forming a modern lifestyle."

Molfo is based in Kyoto, which is called the thousand-year capital. Japanese history and culture cannot be described without an understanding of the city. Aesthetic sense, traditional craft techniques, hospitality, customs etc. all originated here, and fostered a unique culture within Japan.

We are working with craftsmen and creators in Kyoto. We produce products that treat both people and the planet by selecting eco-friendly materials, technologies, and an ethical trade system.

We offer you natural and truly luxurious lifestyle products. We think adapting to contemporary life, proposing beauty and future-directed solutions are the most important qualities of modern design. It gives us great joy to share modern life style products with you.

Soft vessels

Left back: Spica M
Center in front: Capella
Right back: Rigel



Rigel
Rigel ver.B



Capella



Enif

Soft vessels made of 100% fine hemp

These baskets are made of 100% fine hemp fabric and have double bag structures. Hemp is a material with excellent antibacterial and deodorizing qualities. These beautiful handmade baskets are meant for bread, but they are light in weight and soft in touch, so they are also suitable for keeping delicate things. It will be a joy to use them anywhere in your home. Perfect for make-up essentials like puffs or brushes, lingerie, jewelry, glasses, baby items, etc.



Rigel ver.B



*We believe
hemp can heal the world*

With human reliance on fossil fuels and synthetic fibres comes mass deforestation for wood pulp agriculture. If any single crop can provide a solution to environmental destruction for resources, it is certainly hemp. Hemp is a renewable natural resource that can be used to manufacture thousands of different products, and when the plant is harvested, almost every part of it can be used. Hemp is also the most environmentally friendly option as it requires significantly fewer pesticides and provides much larger yields per hectare compared to other crops, such as cotton.





Hemp: A symbol of God in Japanese Shintoism

Hemp was an important plant alongside rice for the Japanese Emperor and his family. Because of the strong vitality of hemp, it is considered as a symbol of prosperity and was regarded as an object representative of the divine spirit of God. The amulet of Isé Shrine is one example of the fact that hemp was used as a symbol of God in Shintoism. Isé Shrine is one of the most prominent shrines in Japan and is a quiet, sacred place. This amulet is made of paper nowadays under the name "Jingu-Taima", but in the past, hemp fibers were used. "Taima" means "hemp" in Japanese. The shinto religion emphasizes "purification", and hemp is said to have the power to cleanse and purify. The hemp amulets used at festivals and during prayers by priests are considered to be the garments of the Gods with the power to purify sins and cleanse the dirt created by human beings. Moreover, it is believed that the use of hemp fibers, which absorb sweat, dirt, etc., not only keeps the body clean but also free from disease and misfortune.

In Japan, the earliest traces of hemp, used for making clothes and fishing lines, and consumed as edible seeds, date back to the Jomon Period, a time in Japanese prehistory that existed from about 15,000 years ago (around the 131st century BC) to approximately 2,300 years ago (around the 4th century BC).

Japan and the world now

According to the Cannabis Control Act (cannabis is the scientific name given to hemp), Japan was prohibited from cultivating hemp after the Second World War by the United States of America. Although it was the United States that compelled Japan to pass the strict Cannabis Control Act in recent years the US has made successful efforts to ease restrictions on hemp production and use. Moreover, the US state governments' and citizens' movement to legalize medical cannabis, which commenced from the 21st century, influenced certain EU countries and Canada. Currently, in these countries the use of medical cannabis is legally permitted.



Recent trends

- October 2018, Canada lifted the ban on cannabis production, irrespective of medical, recreational, or industrial use.
- The American Cancer Society (ACS), the world-renowned authoritative American cancer organization, officially acknowledged the benefits of cannabis use for cancer treatment.
- It has been scientifically proven that cannabis contains components that reduce cancer cells and are beneficial in the treatment of dementia and epilepsy.
- It was announced that the World Health Organization (WHO) may change its recommendations on cannabis in November 2018.
- In the United States, the United Kingdom, and Canada, preparations are already underway to rapidly develop cannabis into medicinal products and luxury items.
- Clothing, paper products, building materials, plastics, fuels, health food, cosmetics, etc. are also being developed from cannabis.
- Mercedes-Benz, BMW, and other car companies are already using cannabis for automobile materials.
- In addition, hemp is being used as a replacement for petrochemical products as it is environmentally friendly.

Keeping long-lasting freshly baked bread

Hemp fabric is a cloth that breathes well, thus allowing the moderately hot air from the freshly baked bread to escape and ensuring that the savoury texture of the bread's surface is not affected by moisture unlike a bread wrapped in plastic.

The bread basket is made of 100% fine hemp fabric and has a double bag structure. When a

heated pouch stuffed with grain is placed in the inside pocket of the bag, it keeps the bread warm for the duration of the meal.

An experimental result

The inside temperature of the basket without the pouch was 18 °C. After placing the warmed pouch was 37 °C. Twenty minutes later, it was 33 °C. It only fell 4 °C in twenty minutes.





Spica

The art of manipulating fabric

Generally, fabric is not considered as a material shaping a three dimensional form. When we work on it with our hands, it becomes stronger and can be used as a structural material. Moreover, its delicateness isn't lost. Rather, elegance is added. While giving it strength. Our hand craft technique uses only thread, needles and love. This ensures the integrity of the fabric and its beauty.



Deneb



Keep bread warm and tasty
Bread-bag / portable bread basket

The hemp bread bag is a portable breadbasket. You can enjoy it for a meal outside, picnic or in your favourite place. Washing it is easy, and when you don't use it, you can fold it compactly and store it.



60 sec.



Hadar
Hadar Long



*Heirloom quality
Titanium chopsticks*

Alatus
silver/black



The consumption of disposable wooden chopsticks in Japan is around 25 billion a year, and it has been reported that China is one of the largest exporters around. Ninety percent of the world's chopsticks are manufactured in China. China produces around 45 billion chopsticks a year, which is equivalent to about 1,660,000 cubic meters of forest, or 18,500 wooden houses. Alatus was born in search of an alternative material for disposable chopsticks. In addition, specific care has been taken with regard to the aesthetics of the object and its use as a lifelong

One of the most significant characteristics of titanium chopsticks is when they rest on a table their tips do not touch of the table surface. Therefore chopsticks rest that are normally used for sanitary purposes are no longer needed. In addition, this design has an organic curve that adjusts to the hand. It also has a special characteristic, in that the hand movement becomes more elegant when one intends to use the chopsticks in the resting position.



OXY

Rolling, no lifting

The bottom of the pitcher is spherical facilitating an easy and elegant pouring movement when the pitcher is full of liquid.



designer

Hiromi Kim

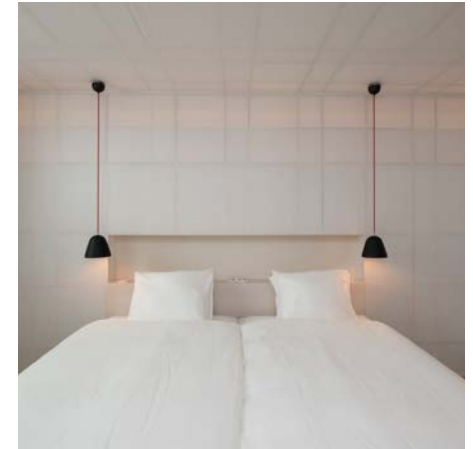
www.hiromikim.com



Things that give hope and joy through their creation, and also to lead the future toward a harmonized world, I would like to realize this through my works.

Hiromi Kim was born in Kyoto, Japan. She has studied Interior Architecture at the Kyoto College of Art and Industrial Design at the Politecnico di Milano. After completing the master "Design & Management" at the Politecnico di Milano, she has spent more than ten years in multicultural environments.

Her views are geared toward the construction of a sustainable society. Her designs are not merely superficial and are made for the genuine pleasure of humanity. She is a passionate designer / director proposing solutions for a modern and eco-conscious lifestyle.



NIMON KYOTO
apartment



Office design



System boxes
MDF
370 x 370 x 370 mm
Stacking shelves that enhance the value of recycled materials using an optical illusion.



Capella new

Category	Basket
Materials	hemp
Dimensions	Ø:33, H:10 (cm)
Colors	White
Item No.	TW-HB18040



Capella mini new

Category	Basket
Materials	hemp
Dimensions	Ø:26, H:8 (cm)
Colors	White
Item No.	TW-HB18041



Enif with lid new

Category	Bread Basket
Materials	hemp, grain ●
Dimensions	W:28, D:12,H:12(cm)
Colors	White
Item No.	TW-HB18020



Spica L

Category	Bread Basket
Materials	hemp, grain ●
Dimensions	Ø:23, H:18(cm)
Colors	White
Item No.	TW-HB15010



Spica M

Category	Bread Basket
Materials	hemp, grain ●
Dimensions	Ø:23, H:15(cm)
Colors	White
Item No.	TW-HB15020



Enif new

Category	Bread Basket
Materials	hemp, grain ●
Dimensions	W:26, D:10,H:10(cm)
Colors	White
Item No.	TW-HB18021



Rigel ver.B new

Category	Bread Basket
Materials	hemp, grain ●
Dimensions	W:20, D:14,H:8(cm)
Colors	White
Item No.	TW-HB18010



Rigel

Category	Bread Basket
Materials	hemp, grain ●
Dimensions	W:20, D:14,H:8(cm)
Colors	White
Item No.	TW-HB15040



Alatus Black

Category	Titanium Chopsticks
Materials	Titanium, Ion Plating
Dimensions	W:22, D:1, H:1.2(cm)
Colors	Black
Item No.	TW-CH0902BK-SI



Alatus

Category	Titanium Chopsticks
Materials	Titanium
Dimensions	W:22, D:1, H:1.2(cm)
Colors	Silver
Item No.	TW-CH0901SV-SI



OXY

Category	Pitcher
Materials	Limoges
Dimensions	W:23, D:12, H:26(cm)
Colors	Beige
Item No.	TW-CR0301WH-SA



Hadar

Category	Bread Basket
Materials	hemp, grain ●
Dimensions	Ø:21, H:9(cm)
Colors	White
Item No.	TW-HB17010



Hadar Long

Category	Bread Basket
Materials	hemp, grain ●
Dimensions	W:33, D:20, H:8(cm)
Colors	White
Item No.	TW-HB17020



Deneb

Category	Bread Bag
Materials	hemp, grain ●
Dimensions	W:16, D:12, H:24(cm)
Colors	White
Item No.	TW-HB16010-SA

- The included a pouch stuffed with grain.

*The pouch can use repeatedly about 200 times.

*Do not warm more than one minute in a microwave oven.

*Keep this pouch out of children's reach.

We take reservations for misprints, price changes, currency adjustments and that items at the time of ordering may be sold out.

Molfo is a premium eco-conscious brand
creating handcrafted soft vessels made of 100% fine hemp.

M O L F O[®]

KYOTO

